

L202

PETROSANI-TARGU JIU



MANUAL

History:

- This route is one of the most complex routes in Europe, with many artistic elements that contain many viaducts, 44 tunnels and beautiful landscapes. The route joins two historical regions, Transylvania and Oltenia through the Defileul Jiului National Park that crosses the Carpathian Mountains.
- The Filiași - Bumbești - Livezeni railway connects the Transylvanian Plateau with the Romanian Plain through the coal basin of the Jiu Valley and is famous in history for the Bumbești - Livezeni section completed a few years after the Second World War. In addition to its capital importance in rail transport, the railway that crosses the Jiu Valley also offers spectacular views.
- The line was built by the CFR administration between 1886 and 1948 in five stages. In the first two phases, the Filiași - Cărbunești (46 km) and Cărbunești - Târgu Jiu (24 km) railway sections were inaugurated in 1888, with work being carried out at a steady pace because they were declared works of public utility. For 27 years, Târgu Jiu was the end of the line on this route.

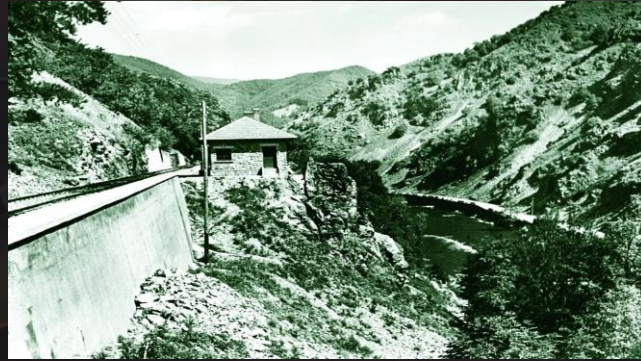
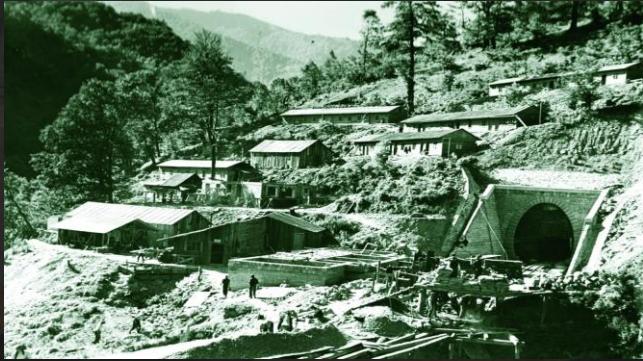
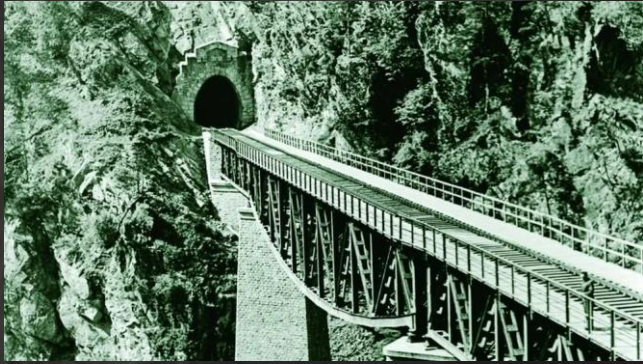
In the third stage, between 1915 and 1916, the Târgu Jiu - Bumbești section (16 km) was built at an impressive pace, following the outbreak of the First World War. Further work on the Bumbești - Livezeni railway was halted by Romania's entry into the First World War. In phases 4 and 5, work on the Bumbești - Livezeni section (31 km) began on 1 March 1924. Between 1931 and 1937 the work on this section was kept in a state of preservation, and on 4 November 1941 the Bumbești - Meri section (8 km) was inaugurated for the transport of materials and workers to the lots and on 31 October 1948 the festive opening of the Meri - Livezeni section (23 km) took place.

Five construction companies, soldiers of the Romanian army and 2,988 young volunteers (the young people were enrolled in the "Gheorghe Gheorghiu Dej National Worksite" opened on April 1, 1948) worked on the construction sites of this section of only 31 km.

It is a monument to Romanian technology, being the most complex and difficult railway route built in Romania. The 21 bridges, 59 bridges, 25 viaducts, 36 tunnels and other works of art make the Bumbești - Livezeni railway the most spectacular railway route in the country.

It is also remembered for the way it featured prominently in communist propaganda with its "voluntary youth brigades" and the expression "the valley resounds". This was the location for the film "The Valley Sounds" directed by Paul Călinescu, because this was the last bastion of the brigadier, the last area where digging and excavation took place, the Illoaie Bridge - Pietrele Albe - Fabian Viaduct being the most difficult area.

Between 1972-1974 the railway Filiași - Targu Jiu - Bumbești - Livezeni was electrified. It is part of the 201 km long line 202 Filiași - Târgu Jiu - Petroșani - Simeria. Line 202 connects the 900 and 200 lines and passes through beautiful landscapes, especially in the Subcetate area and in the Bănița - Merișor pass area, at an altitude of 720 metres in the Șureanu mountains. If you want to get to the Retezat, the Subcetate train station, located a few km from Hațeg, is the best option. You can also take the train from Simeria to Craiova and Bucharest.



L202 PETROSANI-TARGU JIU CONTAINS:

- 15 stations with real 3D models



- 53 km of electrified line
- Real DEM data an Google Maps Overlay
- 10 standard scenarios
- Livezeni Coal Mine
- 2 Loco Depot: One in Petrosani and one in Targu Jiu
- Custom objects
- DTV Signaling system
- INDUSI/PZB safety system

In order for the route session to work correctly, you will also need to download and install the following assets:

ELECTRIC:

<https://railstudios.com/product/romanian-class-43-v-2-5/>
<https://railstudios.com/product/st-040-ec-060-da/>
<https://railstudios.com/product/060-ea-v1-1/>
<https://railstudios.com/product/060-ea-mini-pack-1/>
<https://www.rsslo.com/product/taurus-obb-1016/>

DIESEL:

<https://railstudios.com/product/lde-2100-egm-v1-0/>
<https://railstudios.com/product/ai-railcars/>
<https://railstudios.com/product/ro-60-1396-0/>
<https://railstudios.com/product/060-da-passenger-pack/>
<https://railstudios.com/product/mega-pack-060-da-2/>
<https://railstudios.com/product/060-da-freight-pack/>
<https://railstudios.com/product/mega-pack-060-da/>
<https://railstudios.com/product/invisible-locomotive/>
<https://railstudios.com/product/ldh1250-pack/>
<https://railstudios.com/product/ro-040-dha-dhb-pack/>
<https://railstudios.com/product/ldh18-pack/>
<https://railstudios.com/product/romanian-srd642-pack/>
<https://www.rsslo.com/product/desiro-obb-5022-br-642-2/>
<https://www.rsslo.com/product/hercules-obb-2016/>
<https://virtual-railroads.de/de/diesellokomotiven/191-db-br232-.html>
<https://railstudios.com/product/ut-60-1186-0/>

PASSENGER:

<https://railstudios.com/product/romanian-ava-2190-pack/>

<https://railstudios.com/product/romanian-dmt-pass-car-pack/>

<https://railstudios.com/product/26-36-16pack/>

<https://railstudios.com/product/ro-26-36-16-minipack/>

<https://railstudios.com/product/hu-efg-pack/>

<https://railstudios.com/product/romanian-7131-sleeping-cars-pack/>

<https://railstudios.com/product/ro-71-31-033/>

<https://railstudios.com/product/romanian-1955-full-pack/>

<https://railstudios.com/product/romanian-2055-full-pack/>

<https://railstudios.com/product/romanian-modernised-bz-passenger-pack/>

<https://railstudios.com/product/romanian-y-192076-full-pack/>

<https://railstudios.com/product/romanian-y-192083-full-pack/>

<https://railstudios.com/product/romanian-y-classic-full-pack/>

<https://railstudios.com/product/ro-iva-y-modernised-minipack/>

<https://railstudios.com/product/ro-iva-rusty-minipack/>

<https://railstudios.com/product/romanian-bz-passenger-cars-pack/>

<https://railstudios.com/product/romanian-26-26-wagon-pack/>

FREIGHT:

<https://railstudios.com/product/romanian-eacs-pack/>

<https://railstudios.com/product/romanian-fals-pack/>

<https://railstudios.com/product/ggs-vintage-wagons/>

<https://railstudios.com/dtg-train-simulator/freight-cars/>





RAILFORGE

RAIL-FORGE.COM

[FACEBOOK](#)

[CONTACT](#)



©RailForge. All Rights Reserved

©RailForge. powered by Inari IT Group SRL